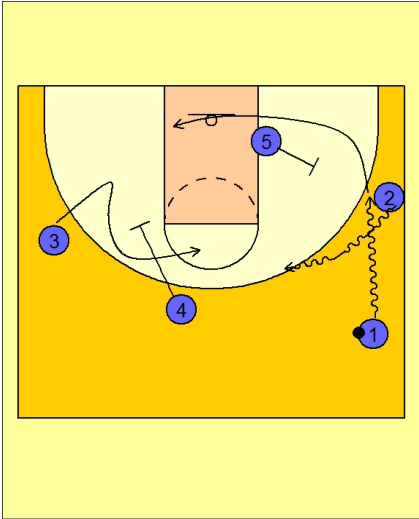




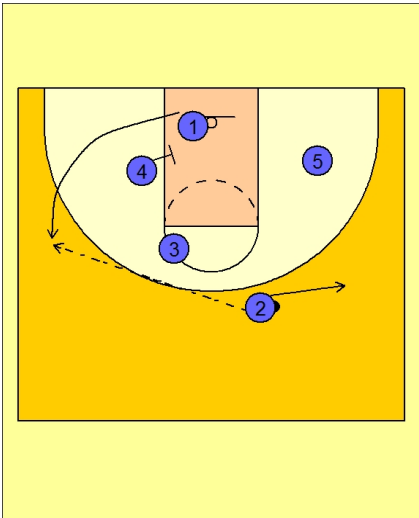
Set play (17)



Louisville Set Play

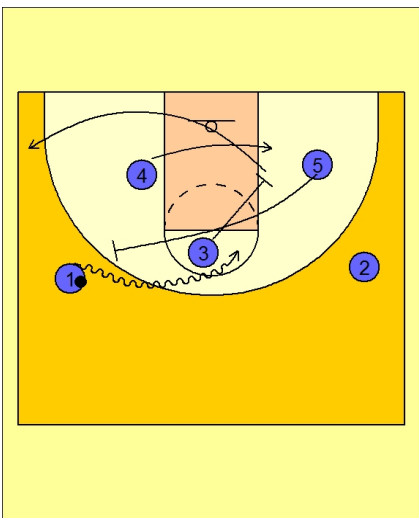
#1 and #2 execute a dribble hand-off on the right wing.

As the dribble hand-off happens, #4 screens down for #3 on the left wing area.



Louisville Set Play

#4 then cleans up the baseline screen on #1. #2 passes to #1 and clears out to the right wing.



Louisville Set Play

#3 screens #5 into pick and roll with #1.

#4 searches and #3 pops out to the corner.